

DIVERSITY HOMES



4414 Silver Blvd. (Bismarck)

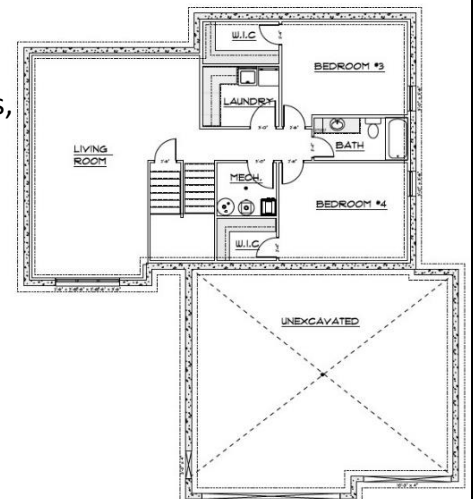
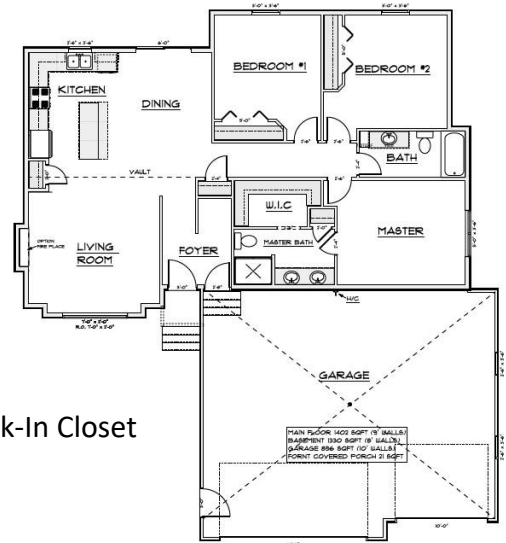
\$444,900

THE MONTEREY

(Exclusive to The Silver Ranch Development)

Features Include:

- Open Floor Concept, Split Level with 1,402 SF on the Main Floor
- Additional 1330 SF in the Unfinished Basement
- 9' Main Level Ceilings
- 3 Bedrooms, 2 Baths on the Main, Including a Master Suite w/Large Walk-In Closet
- Quartz Countertops Throughout
- Diversity Signature Stairway Rail
- Unfinished Basement consists of Additional Space for 2 Bedrooms w/Large Walk-in Closets, 1 Full Bathroom, and Immense Living Room.
- Large Laundry Room Located in the Basement (Finished)
- 3 Stall Garage Includes Hot/Cold Water, Floor Drain, Insulated Garage Doors, and is Roughed- in for a Future Heater



Contact:

Stephanie Metzger 701-220-4490

Shawnee Muller 701-202-0694

Office 701-751-399