

DIVERSITY HOMES



4420 Silver Blvd. (Bismarck)

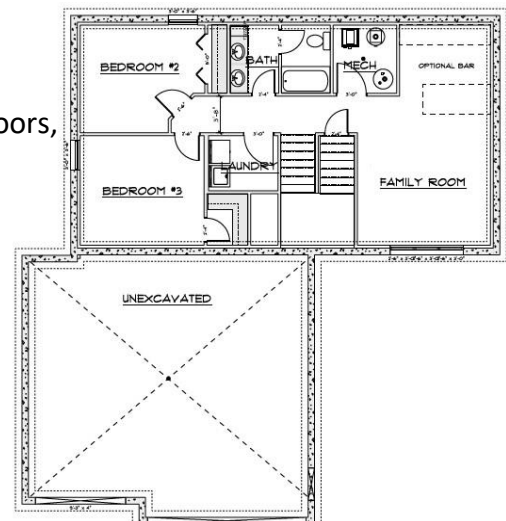
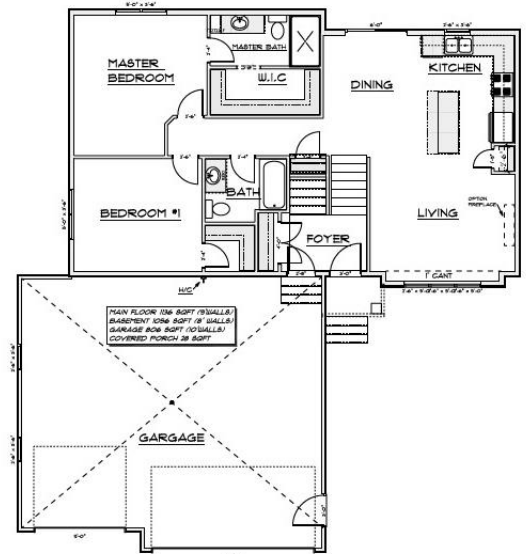
\$419,900

THE SANTA FE

(Exclusive to The Silver Ranch Development)

Features Include:

- Open Floor Concept, Split Level with 1,136 SF on the Main Floor
- Additional 1056 SF in the Unfinished Basement
- 9' Main Level Ceilings
- 2 Bedrooms, 2 Baths on the Main (Including a Master Suite w/Large Walk-In Closet)
- Grand Foyer Area with Coat Closet
- Quartz Countertops Throughout
- Diversity Signature Stairway Rail
- Unfinished Basement consists of Additional Space for 2 bedrooms, 1 Full Bathroom, Large Living Room, and Optional Bar
- 3 Stall Garage Includes Hot/Cold Water, Floor Drain, Insulated Garage Doors, and is Roughed- in for a Future Heater



Contact:

Stephanie Metzger 701-220-4490

Shawnee Muller 701-202-0694

Office 701-751-399