

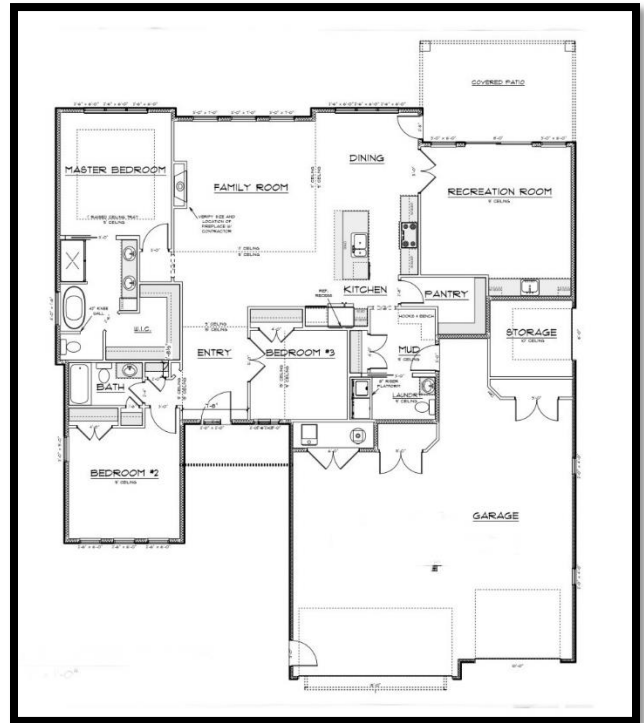
DIVERSITY HOMES



4021 Clairmont Road (Bismarck)

\$679,900

- 2212 Square Feet (Patio Home)
- Open Floor Plan with an Extra Family Room, Wet Bar, and Covered Patio
- Grand Entry with 15' High Ceilings
- 3 Bedrooms, 2 1/2 Baths
- Master Suite w/ Soaker Tub, Tiled Shower and Walk-In Closet
- Kitchen Includes Double Oven, Large Walk-in Pantry, and Quartz Countertops
- Gas Fireplace with Wall Detail
- Oversized, 3 Stall Garage with Hot/Cold Water, and Floor Drain
- Attached Garden Shed with Roll Up Door



Contact:

Stephanie Metzger: 701-220-4490

Shawnee Muller: 701-202-0694

Office: 701-751-3999