

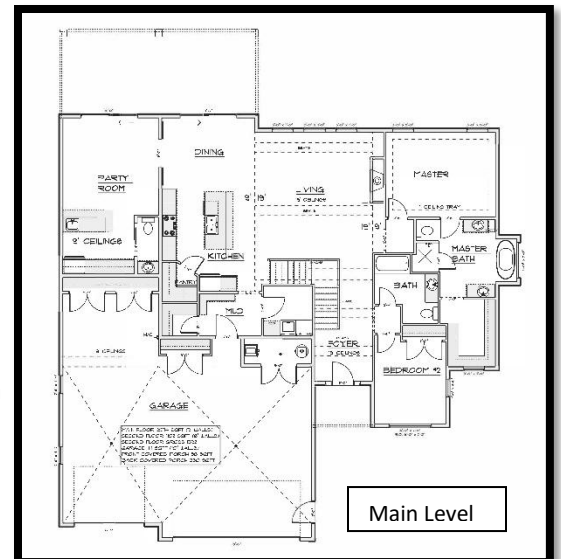
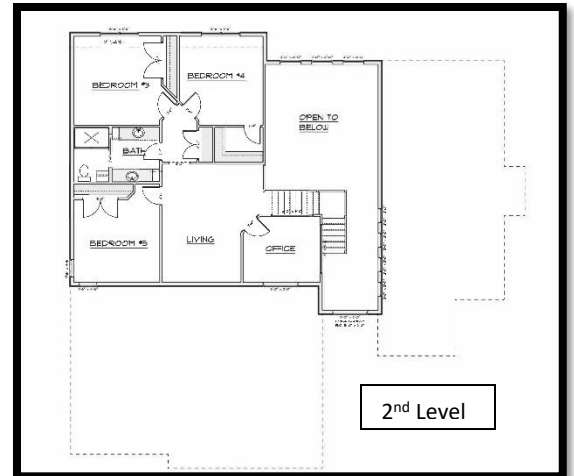
DIVERSITY HOMES



4120 Wrangler Lane (Bismarck)

\$949,900

- Slab on Grade, Two Story featuring 3,176 Sq. Ft.
- 5 Bedrooms, 3 ½ Baths, & 1 Office
- Main Floor Features a Large Master Suite with Custom Shower, Soaker Tub, and a Large Walk-In Closet.
- 19' Ceilings with Beams Throughout Main Living Area
- 2nd floor consists of 3 Bedrooms, Full Bath, Family Room, and Office surrounded in Windows overlooking the Foyer below.
- Large Main Floor Laundry
- Gas Fireplace with Shiplap Detail extended up the 19' high walls, with Shelves and Cabinets along each side.
- Kitchen has a large Island, Walk-in Pantry, & Double Wall Oven
- Mud Room with Large Walk in Coat Closet and Boot Bench Area
- Party Room w/ Wet Bar and ½ Bath
- Large Covered Patio accessing Dining & Party Room
- Oversized, Heated, 3 Stall Garage with Hot/Cold Water & Floor Drain



Contact:

Shawnee Muller 701-202-0694

Stephanie Metzger 701-220-4490

Office 701-751-3999